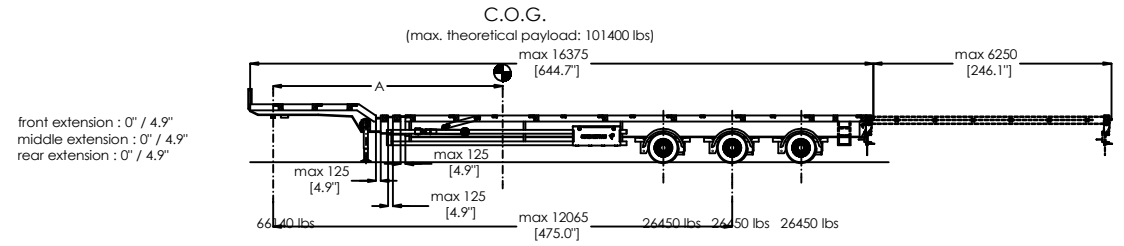
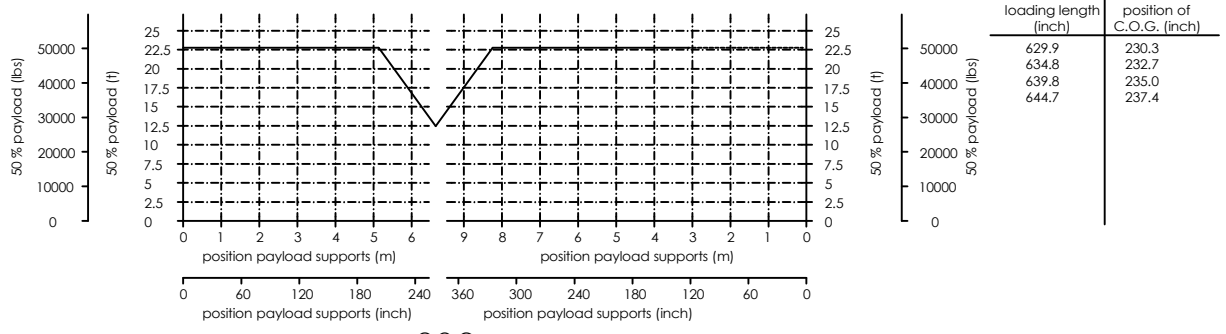
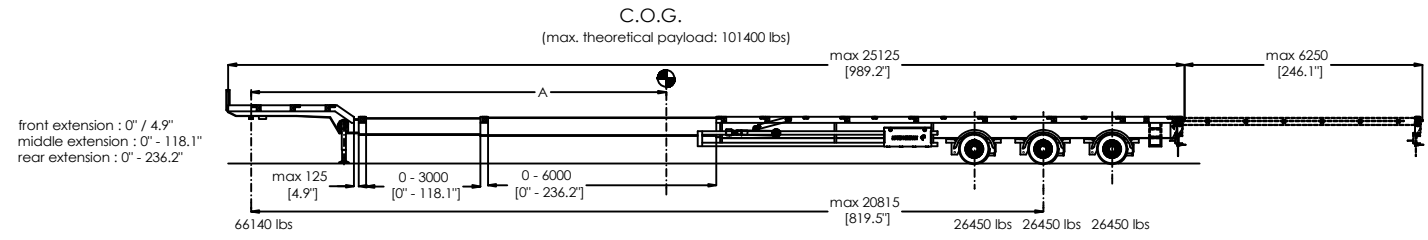
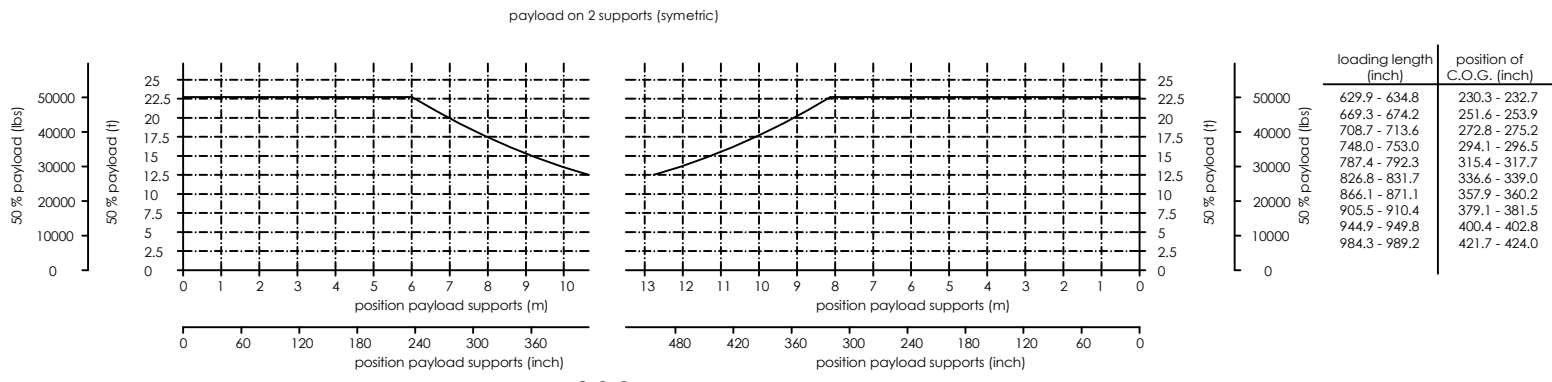




Chapter 8

LOADING CHARTS



Zeichnung: **FAY_DWG-016396(2)** Rev.:0

	Datum	Name	1:140 A3
gez.	27/04/2016	BSC	
gepr.	29/04/2016	FAY	

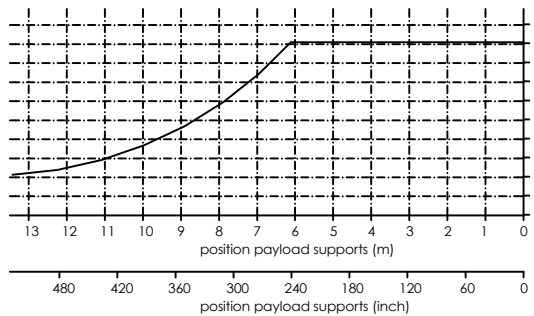
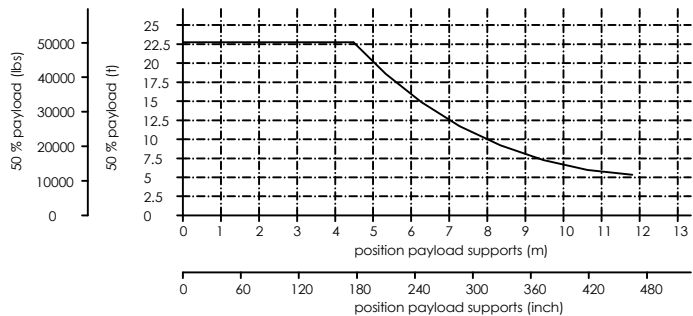
FAYMONVILLE
TRAILERS TO THE MAX

Load Chart
Tele-Z-3L-AAAX-(US)

Faymonville Distribution AG
Duarrefstross 8
L-9990 Weiswampach
Tel.: +352 / 26 90 04 155
Fax.: +352 / 26 90 04 425
E-Mail : general@faymonville.com
Web : www.faymonville.com

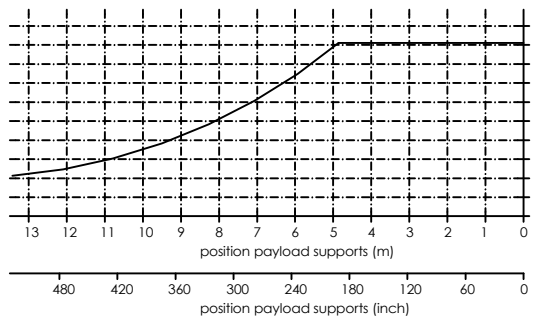
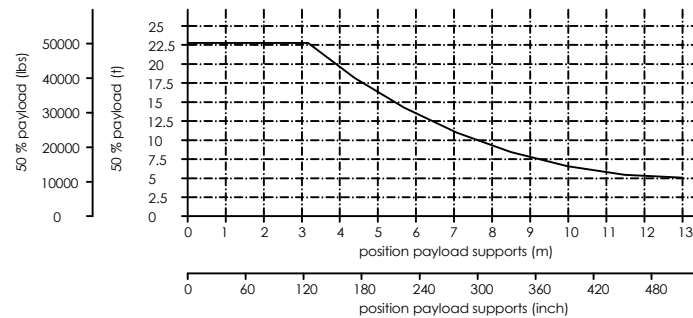
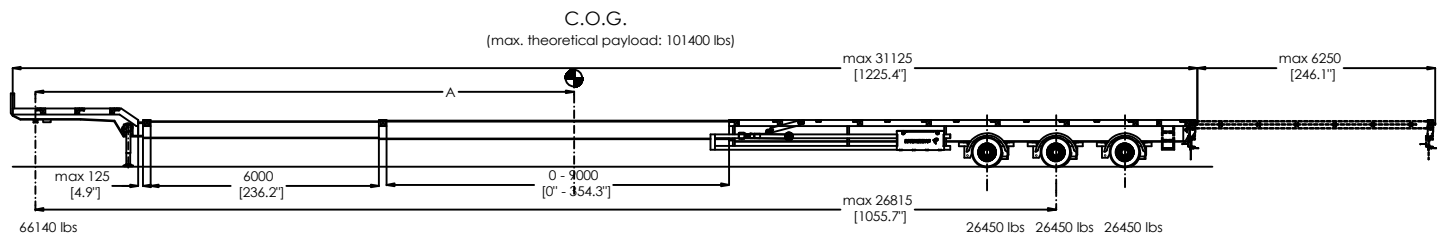
Diese Zeichnung ist unser Eigentum. Vervielfältigung und Weitergabe an Dritte nur nach schriftlicher Genehmigung.

payload on 2 supports (symetric)



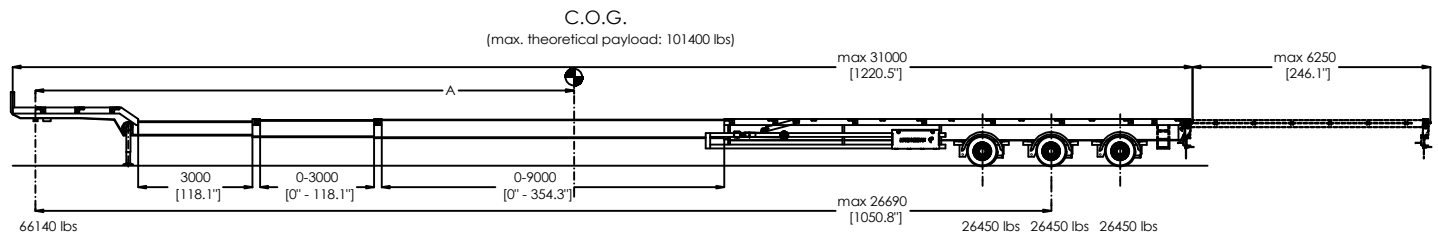
loading length (inch)	position of C.O.G. (inch)
866.1 - 871.1	357.9 - 360.2
905.5 - 910.4	379.1 - 381.5
944.9 - 949.8	400.4 - 402.8
984.3 - 989.2	421.7 - 424.0
1023.6 - 1028.5	442.9 - 445.3
1063.0 - 1067.9	464.2 - 466.5
1102.4 - 1107.3	485.4 - 487.8
1141.7 - 1146.7	506.7 - 509.1
1181.1 - 1186.0	528.0 - 529.9
1220.5 - 1225.4	549.2 - 551.6

front extension : 0' / 4.9"
middle extension : 0' - 236.2"
rear extension : 0' - 354.3"



loading length (inch)	position of C.O.G. (inch)
748.0 - 753.0	294.1 - 296.5
787.4 - 792.3	315.4 - 317.7
826.8 - 831.7	336.6 - 339.0
866.1 - 871.1	357.9 - 360.2
905.5 - 910.4	379.1 - 381.5
944.9 - 949.8	400.4 - 402.8
984.3 - 989.2	421.7 - 424.0
1023.6 - 1028.5	442.9 - 445.3
1063.0 - 1067.9	464.2 - 466.5
1102.4 - 1107.3	485.4 - 487.8
1141.7	506.7
1181.1	528.0
1220.5	549.2

front extension : 118.1"
middle extension : 0' - 118.1"
rear extension : 0' - 354.3"



Zeichnung : FAY_DWG-016396(4)		Rev.:0
Datum	Name	1:140 A3
gez. 27/04/2016	BSC	
gepr. 29/04/2016	FAY	



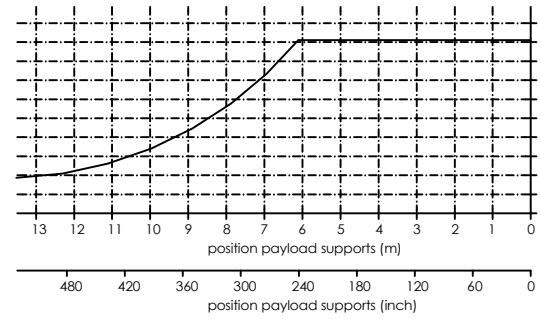
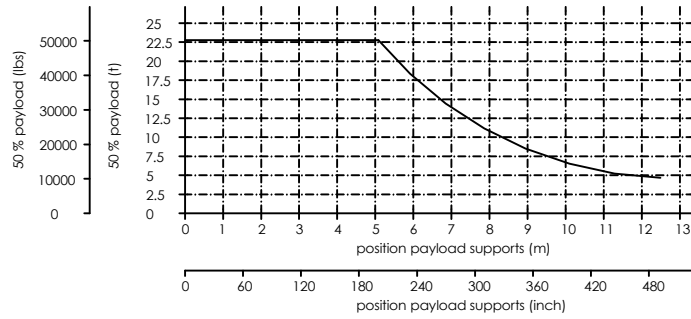
Load Chart

Tele-Z-3L-AAAX-(US)

Faymonville Distribution AG
Duarrefstrooss 8
L-9990 Weiswampach
Tel.: +352 / 26 90 04 155
Fax.: +352 / 26 90 04 425
E-Mail : general@faymonville.com
Web : www.faymonville.com

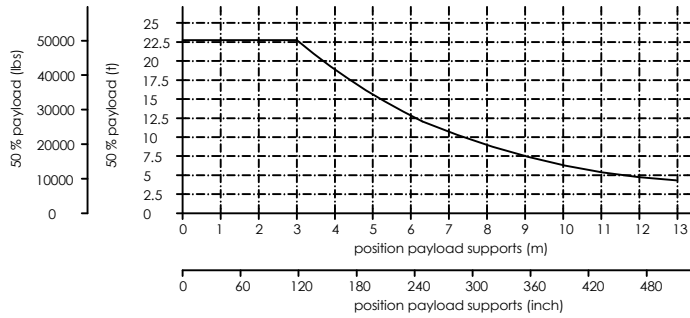
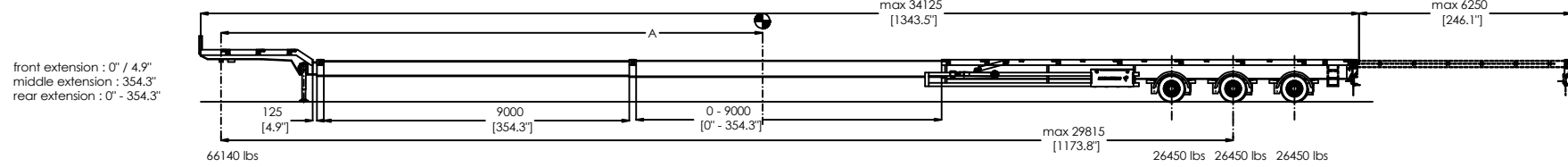
Diese Zeichnung ist unser Eigentum. Vervielfältigung und Weitergabe an Dritte nur nach schriftlicher Genehmigung.

payload on 2 supports (symetric)

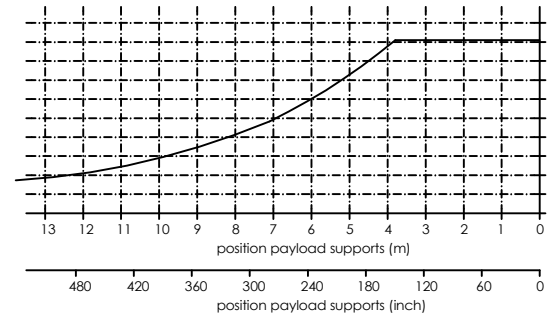


loading length (inch)	position of C.O.G. (inch)
944.9 - 949.8	400.4 - 402.8
984.3 - 989.2	421.7 - 424.0
1023.6 - 1028.5	442.9 - 445.3
1063.0 - 1067.9	464.2 - 466.5
1102.4 - 1107.3	485.4 - 487.8
1141.7 - 1146.7	506.7 - 509.1
1181.1 - 1186.0	528.0 - 529.9
1220.5 - 1225.4	549.2 - 551.6
1259.8 - 1264.8	570.5 - 572.8
1299.2 - 1304.1	591.7 - 594.1
1338.6 - 1343.5	613.0 - 615.4

C.O.G.
(max. theoretical payload: 101400 lbs)

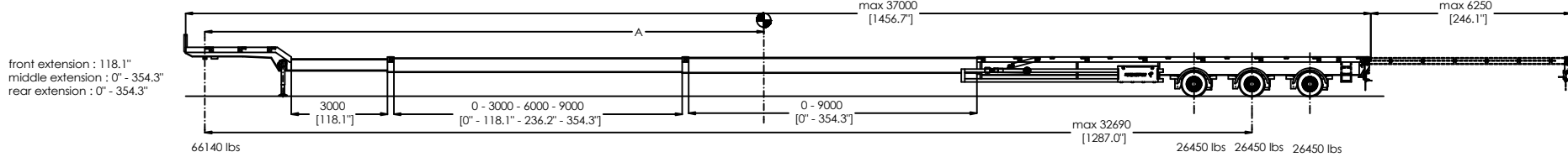


loading length (inch)	position of C.O.G. (inch)
1141.7	506.7
1181.1	528.0
1220.5	549.2
1259.8	570.5
1299.2	591.7
1338.6	613.0
1378.0	634.3
1417.3	655.5
1456.7	676.8



loading length (inch)	position of C.O.G. (inch)
748.0 - 753.0	294.1 - 296.5
787.4 - 792.3	315.4 - 317.7
826.8 - 832.7	336.6 - 339.0
866.1 - 871.1	357.9 - 360.2
905.5 - 910.4	379.1 - 381.5
944.9	400.4
984.3	421.7
1023.6	442.9
1063.0	464.2
1102.4	485.4

C.O.G.
(max. theoretical payload: 101400 lbs)



Zeichnung : FAY_DWG-016396(1) Rev.:0

Datum	Name	1:140 A3
gez. 27/04/2016	BSC	
gepr. 29/04/2016	FAY	

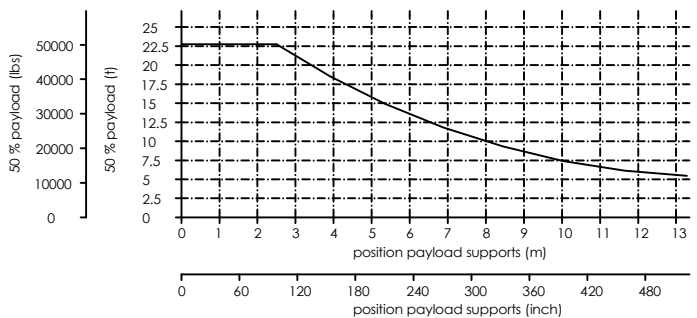


Load Chart

Tele-Z-3L-AAAX-(US)

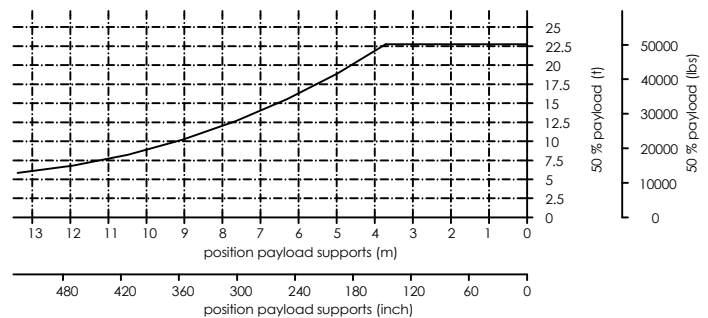
Faymonville Distribution AG
Duarrefstrooss 8
L-9990 Weiswampach
Tel.: +352 / 26 90 04 155
Fax.: +352 / 26 90 04 425
E-Mail : general@faymonville.com
Web : www.faymonville.com

Diese Zeichnung ist unser Eigentum. Vervielfältigung und Weitergabe an Dritte nur nach schriftlicher Genehmigung.



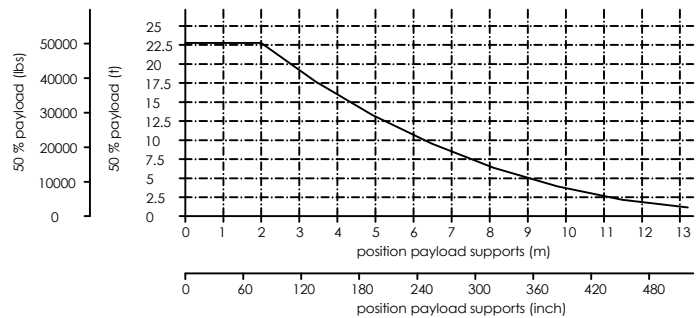
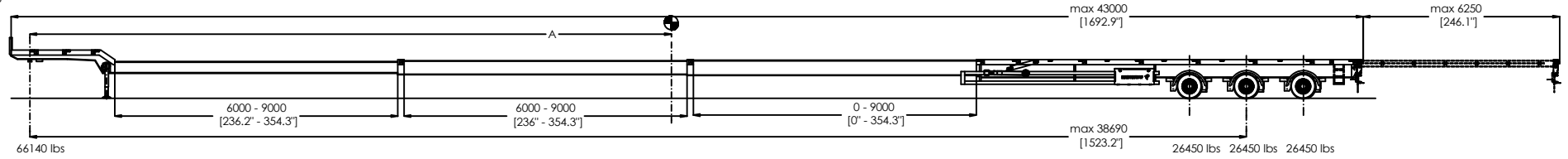
payload on 2 supports (symetric)

loading length (inch)	position of C.O.G. (inch)
1102.4	485.4
1141.7	506.7
1181.1	528.0
1220.5	549.2
1259.8	570.5
1299.2	591.7
1338.6	613.0
1378.0	634.3
1417.3	655.5
1456.7	676.8
1496.1	698.0
1535.4	719.3
1574.8	740.6
1614.2	761.8
1653.6	783.1
1692.9	804.3

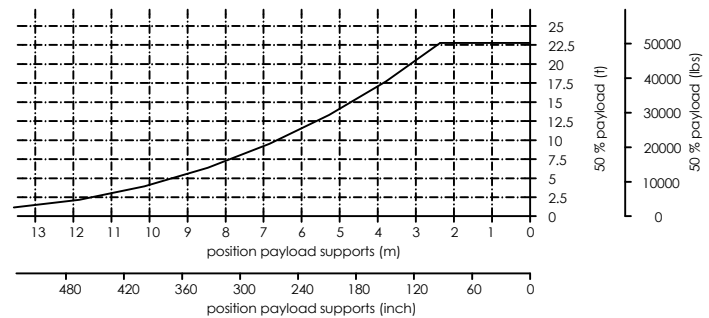


front extension : 236.2" / 354.3"
middle extension : 236.2" / 354.3"
rear extension : 0" - 354.3"

C.O.G.
(max. theoretical payload: 101400 lbs)

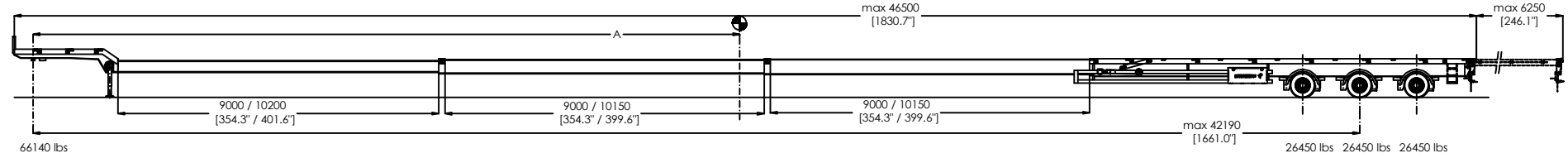


loading length (inch)	position of C.O.G. (inch)
1692.9	804.3
1738.2	831.5
1783.5	858.7
1830.7	885.8



front extension : 354.3" / 401.6"
middle extension : 354.3" / 399.6"
rear extension : 354.3" / 399.6"

C.O.G.
(max. theoretical payload: 101400 lbs)



Zeichnung : FAY_DWG-016396(3)		Rev.:0
Datum	Name	1:140 A3
gez. 27/04/2016	BSC	
gepr. 29/04/2016	FAY	



Load Chart

Tele-Z-3L-AAAX-(US)

Faymonville Distribution AG
Duarrefstrooss 8
L-9990 Weiswampach
Tel.: +352 / 26 90 04 155
Fax.: +352 / 26 90 04 425
E-Mail : general@faymonville.com
Web : www.faymonville.com

Diese Zeichnung ist unser Eigentum. Vervielfältigung und Weitergabe an Dritte nur nach schriftlicher Genehmigung.